

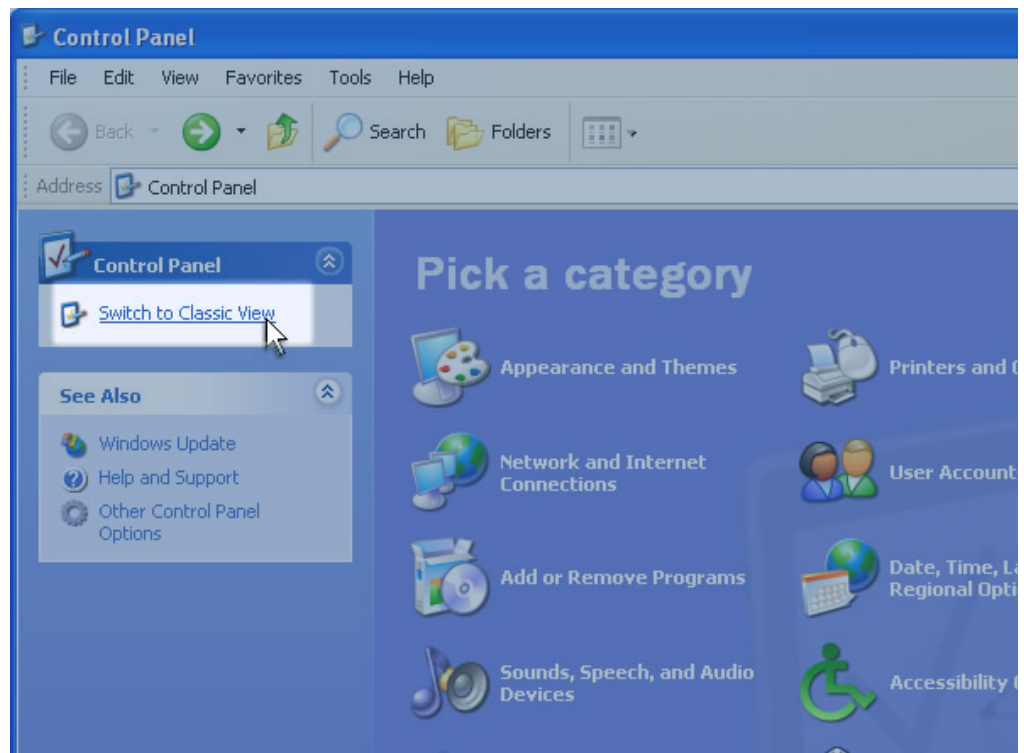


Step 1

Click on the Start button, and go to Control Panel.

Step 2

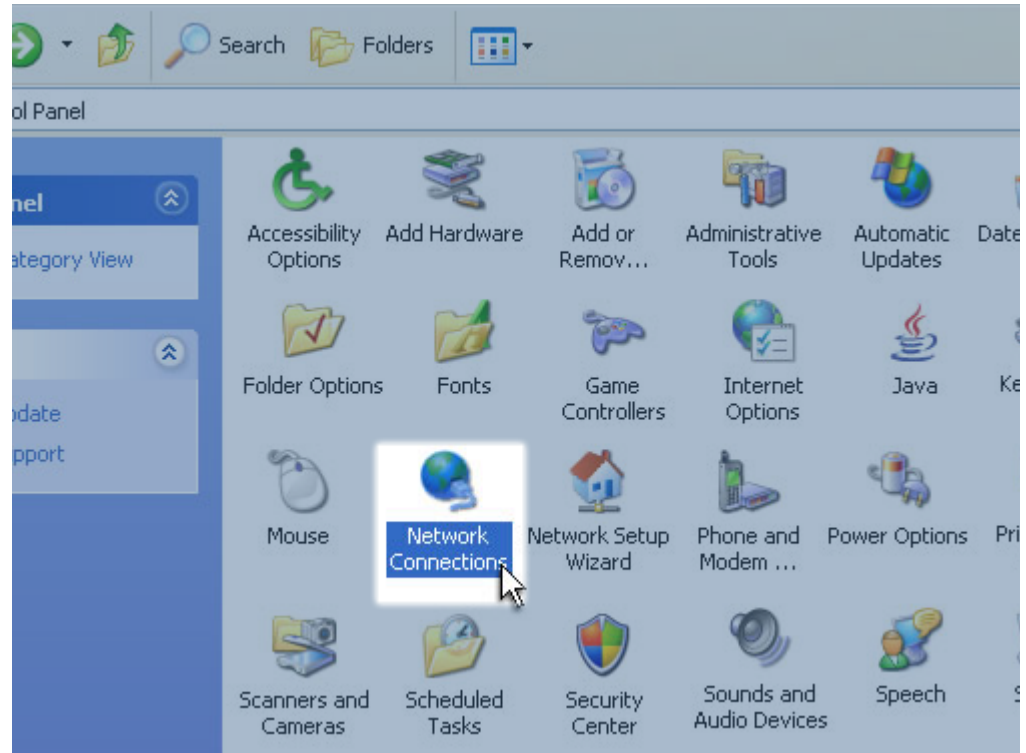
If the Control Panel window appears with Pick a Category at the top, click Switch to Classic View. If not, skip to step three.





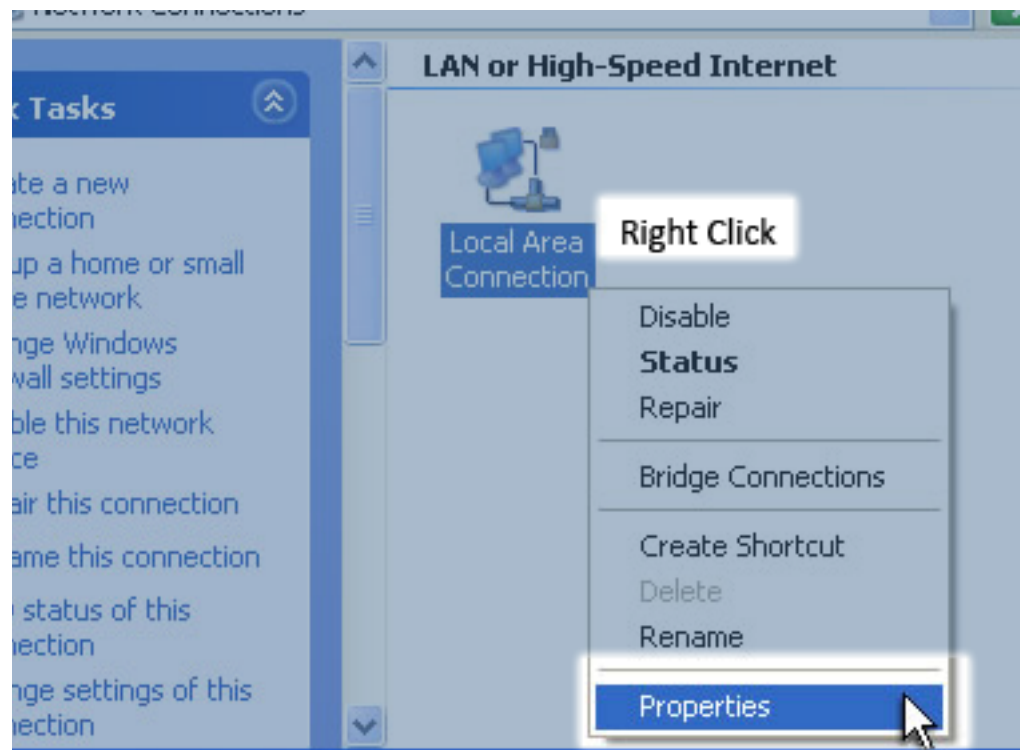
Step 3

Double-click Network Connections.



Step 4

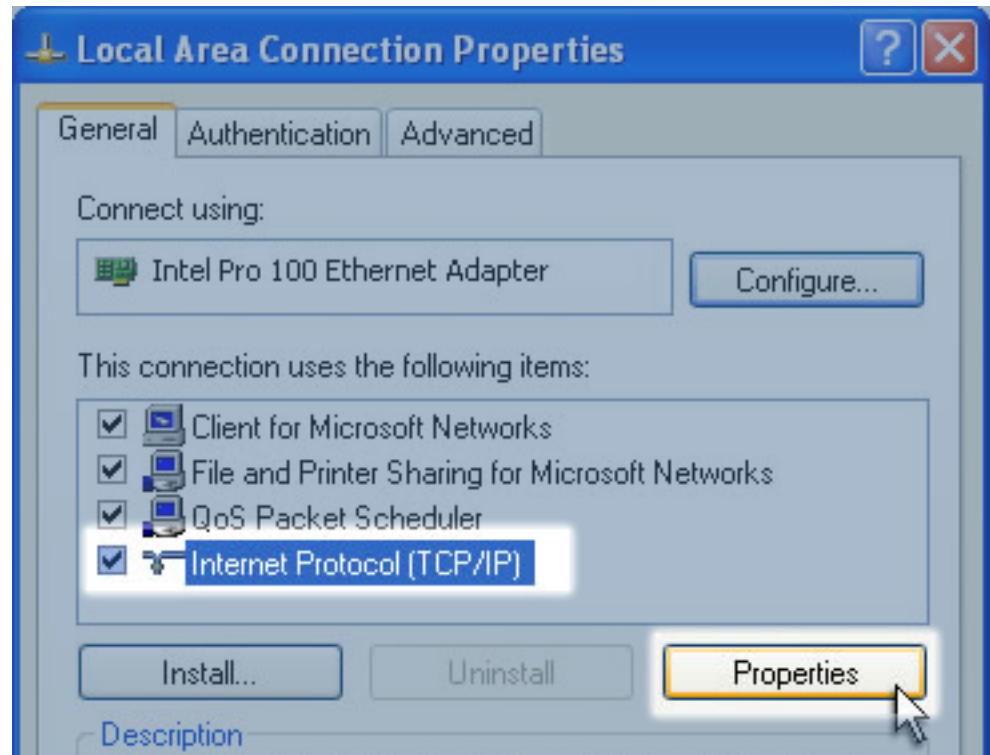
Right-click Local Area Connection, and select Properties.





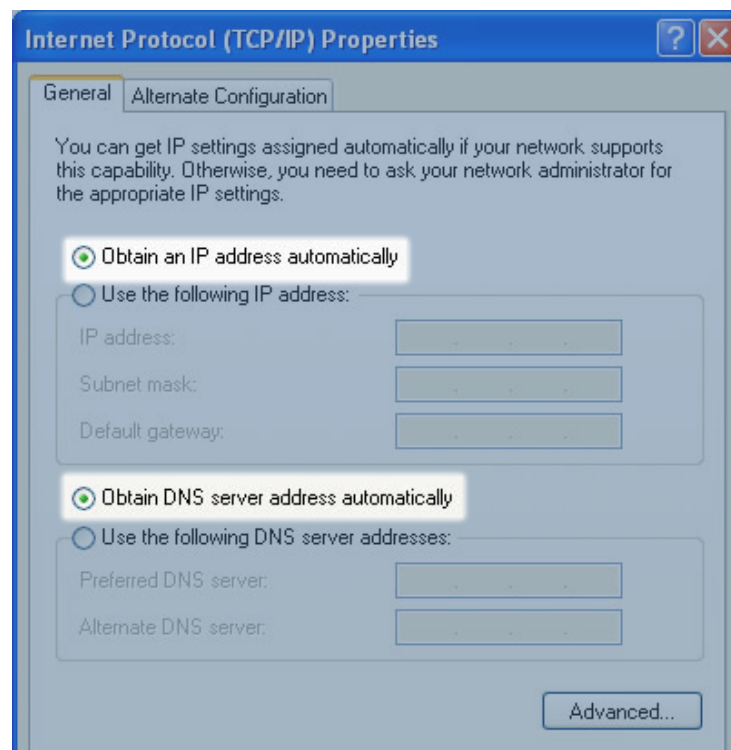
Step 5

Select Internet Protocol (TCP/IP), and click the Properties button.



Step 6

In the TCP/IP Properties window, set the radio buttons to Obtain an IP Address Automatically and Obtain DNS server address automatically.





Step 7

Restart your computer. After the computer has restarted, open your browser to load the “Connecting Your World” web page. If the page fails to load automatically, enter 172.16.0.1 in the browser’s address field, and click the Go button on the browser, or press the Enter key on the keyboard.

