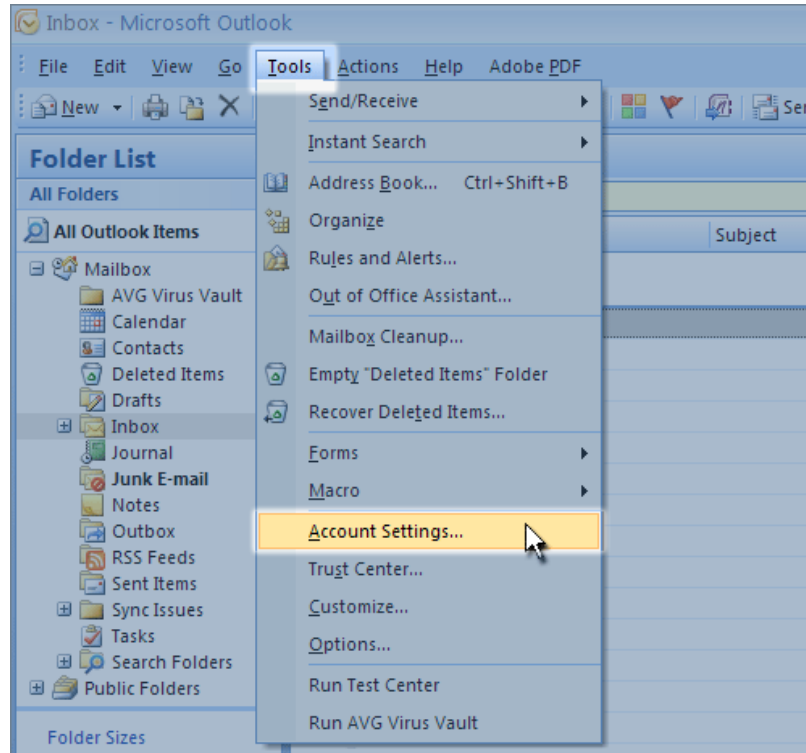




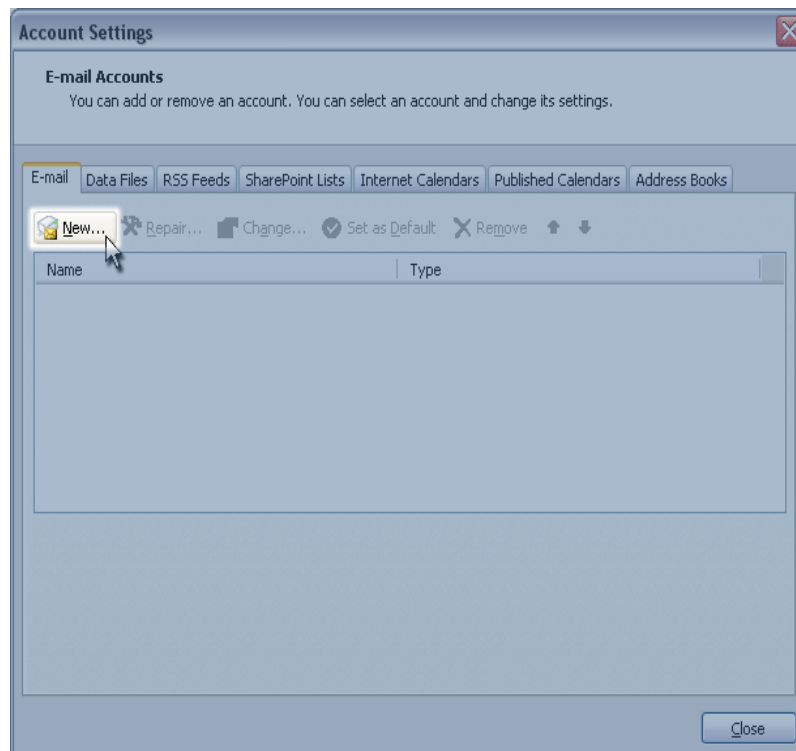
## Step 1

Launch Microsoft Outlook 2007 and go to Tools > Account Settings.



## Step 2

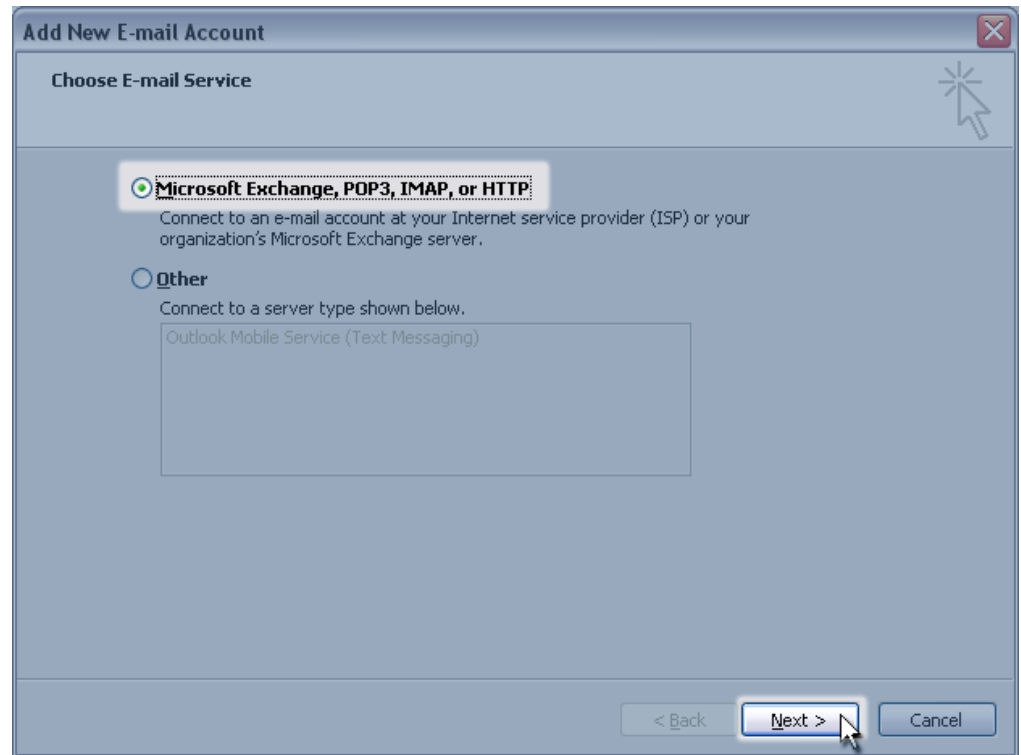
In the Account Settings window, click the New button.





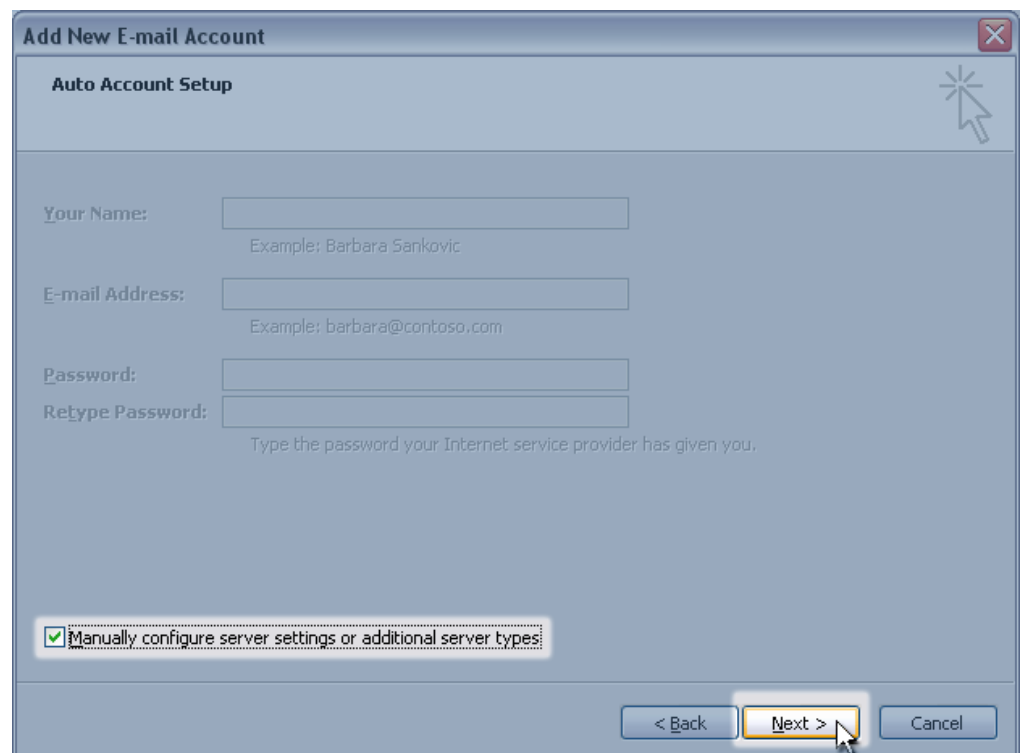
### Step 3

In the Choose E-mail Service window, click the Microsoft Exchange, POP3, IMAP, or HTTP radio button, and click Next.



### Step 4

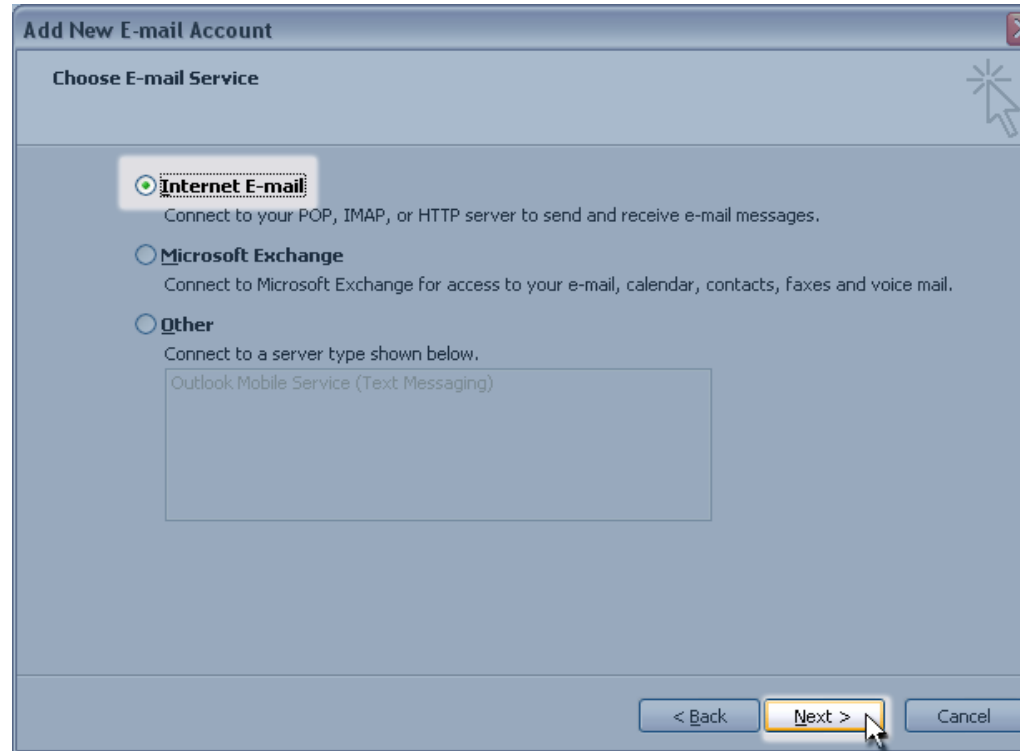
In the Auto Account Setup window, click the check-box for Manually configure server settings or additional server types, and click Next.





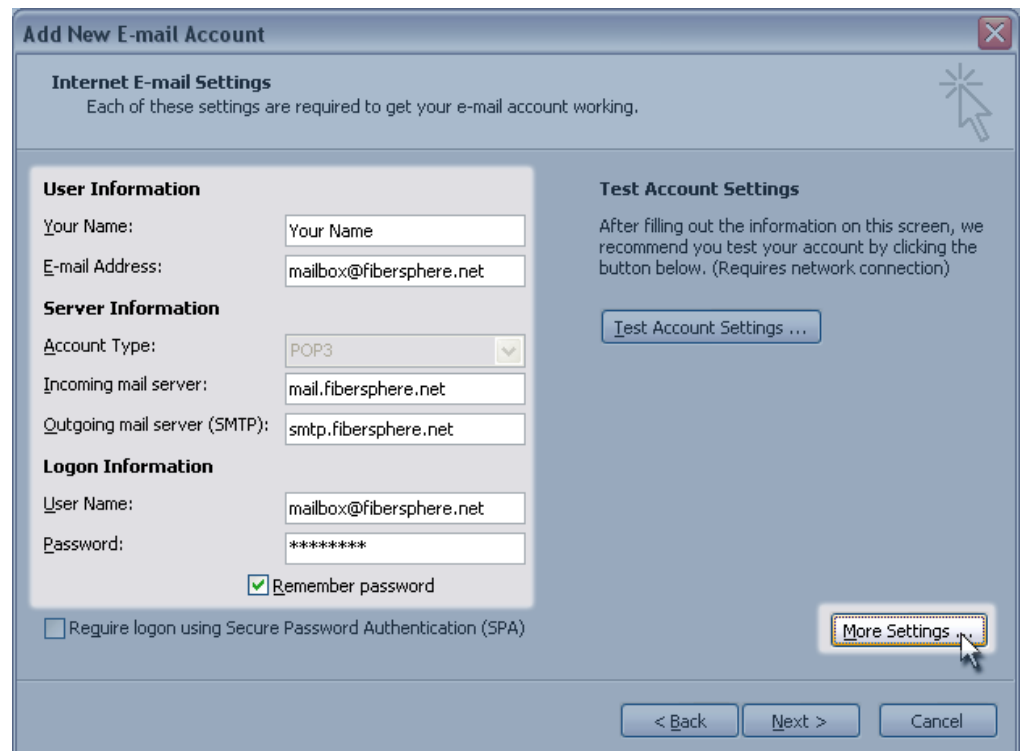
### Step 5

In the Choose E-mail Service window, choose the radio button for Internet E-mail, and click Next.



### Step 6

For the Internet E-mail Settings, perform the following:

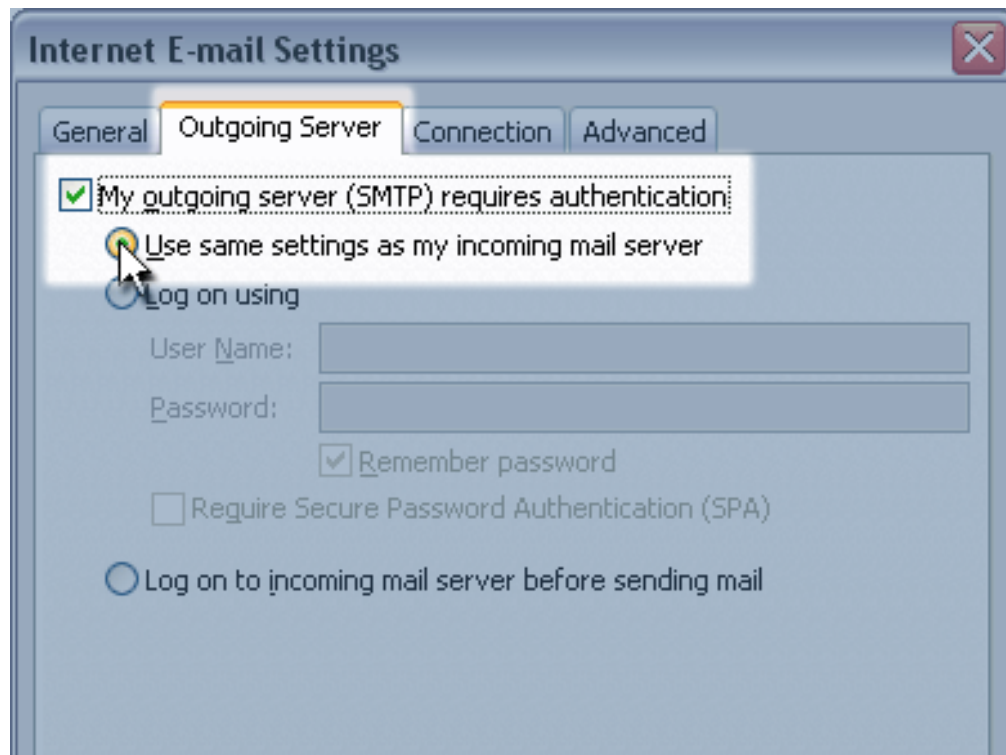




## Step 7

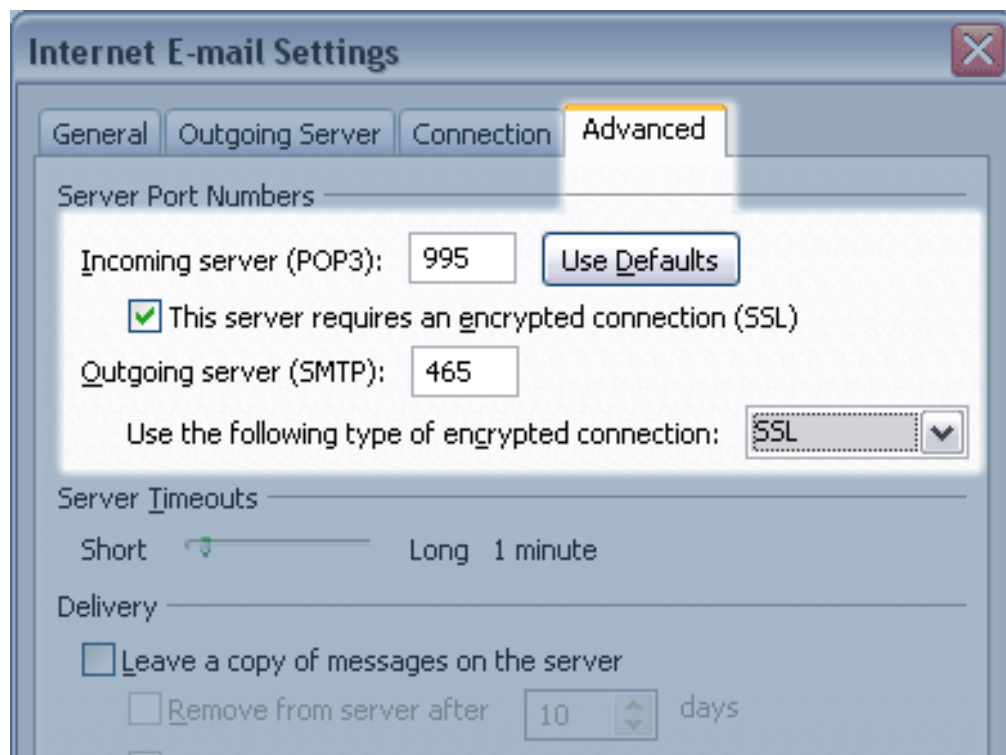
In the Internet E-mail Settings window, perform the following:

- Click the Outgoing Server at the top of the window.
- Check My outgoing server (SMTP) requires authentication.
- Select the Use same settings as my incoming mail server radio button.
- Click OK.



## Step 8

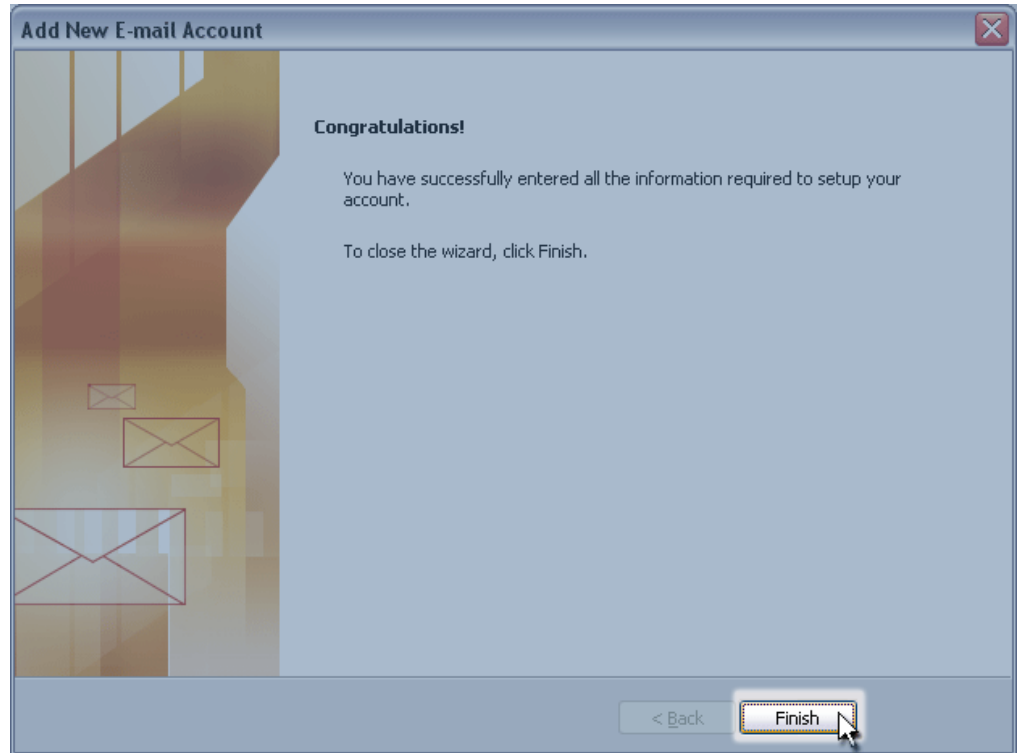
- (Highly Recommended)
- While still in the Internet E-mail Settings window, click the Advanced tab, and perform the following:
- Server Port Numbers
- Incoming: Check This server requires an encrypted connection (SSL). Ensure that the text box shows 995.
  - Outgoing: Select either SSL or TLS. Ensure that the text box shows 465.
- Click OK when finished.





## Step 9

Click the Next button when returned to the original Internet E-mail Settings window. Click Finish in the “Congratulations!” window.



## Step 10

You will now see your e-mail address appear in the Account Settings window. Click the Close button. You are now ready to send and receive mail from your Fibersphere.net e-mail account with Microsoft Outlook 2007!

